



# History & Business Focus



Capital of Business Registration : 5,000,000 Baht

Employees : ~ 97 persons ( Only Thais)

VT MOVE & SERVICE Company is machine's one-stop service for local and international industry. We are Thai's company provide services of transportation, relocation, unloading, unpacking, installation, maintenance and removal machine including Machine's Utility & Construction, Machine's foundation, Machine's System Wiring, Electricity, Piping for small medium and large heavy industrial machinery such as Press Machine Transfer Line, Automation Line, Packaging Line, Food Line, Line Bruckner BOPP, MDO, TDO, EXTRUDER, Plastic Injection M/C, CNC, Laser Cutting, Industrial chiller, Industrial transformer, Printing M/C, Electric Generator, etc. With skill and experience over than 30 years of moving setting up and installation those machineries which size are 1 to 3,000 ton up.

## ❑ IMM Application

- Machine Insertion
- Injection molding
- Ultrasonic
- De-flashing
- Flaming
- Clip Assembly

## ❑ Material Finishing

- Grinding
- Deburing
- Polishing

## ❑ Press Application

- Automation Press
- Automation Washing
- Spot Welding

## ❑ Laser Cutting Cell

## ❑ General Robot Automation

## ❑ Equipment

- Gripper Equipment for press.

## ❑ Service

- PLC Programming.
- Robots Programming.
- 3D Design
- Modifier Systems.





# Material Finishing



## Material Finishing

Robot Material Finishing Standard System for delicate Grinding, Polishing and Sanding process. With Robotic and Force Control System, it is flexible to program for variant of component to achieve an excellent quality.



# Material Finishing



Ref. Video:

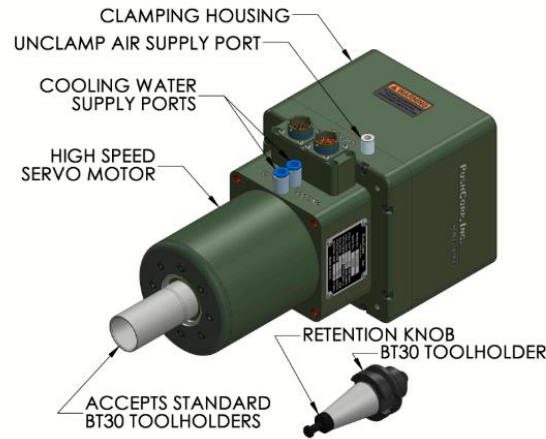




# Material Finishing

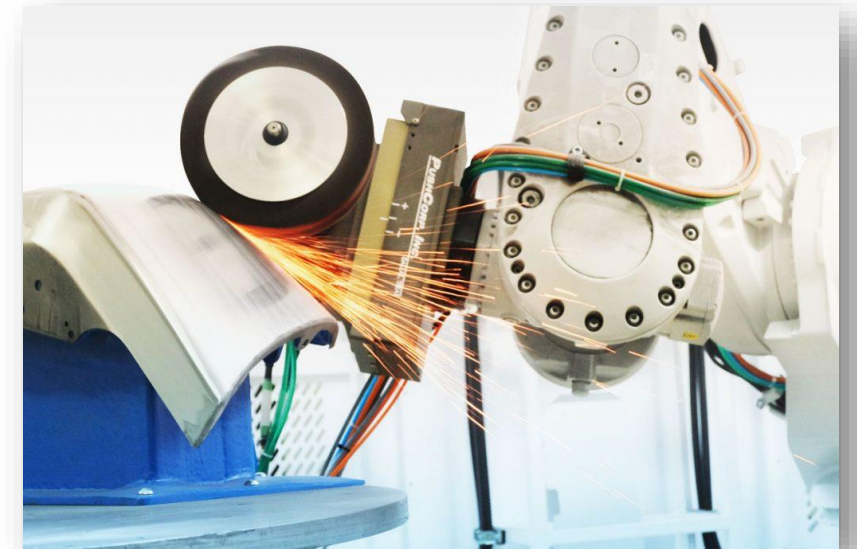


**PushCorp** is the leading manufacturer of robotic material removal end-of-arm tooling. For over 25 years our products have helped customers automate applications that were once considered impossible to do with a robot. Our end-of-arm-tooling makes possible robotic material removal applications such as **Grinding, Sanding, Deburring, Polishing, Weld Shaving, Drilling, Routing, Weld Shaving, Gate Removal, Routing, and Cutting.**



## Specification

- Max Applied Force: 70 lbs [310 N]
- Force Resolution:  $\pm 0.2$  lb. [ $\pm 1.0$  N]
- Update Rate: 2 m/Sec
- Max Payload Weight: 70.0 lbs [31 kg]
- Weight: AFD310-2 - 12 lbs [5.5 Kg]
- Compliant Stroke: 0.8 in [20 mm]
- Supply Air: Dry, 5 $\mu$ m Filtered, Non-lubricated, 80 psi [5.5 Bar]max



**PUSHCORP, INC.**

DALLAS, TEXAS





# Robot For Press Machine



## Press Automation

This is a full Robot Automation for tandem press line. There are 7 robots transfer a stamping part between 5 press machine with high speed. Normally, this line is operated by 10 labours / Shift. With Robot Automation, the customer can decrease number of labour but increase productivity.





# Robot For Press Machine



Simple line, Before selling we provide line layout and simulation for confirm customer to line speed

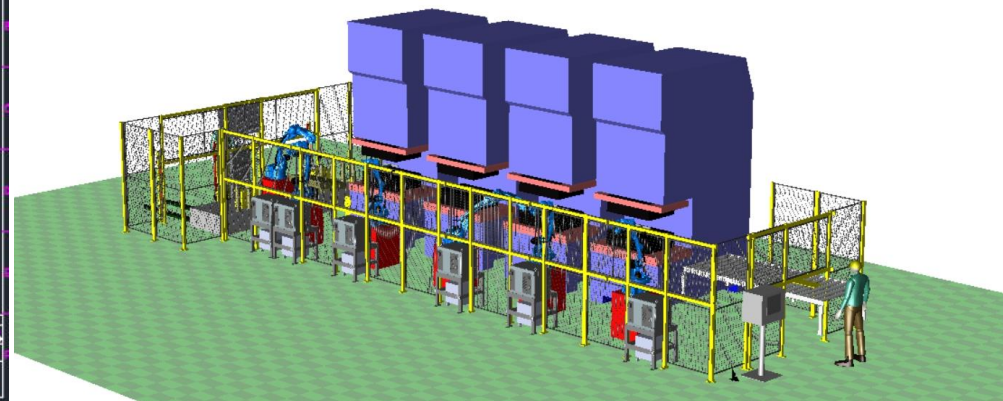
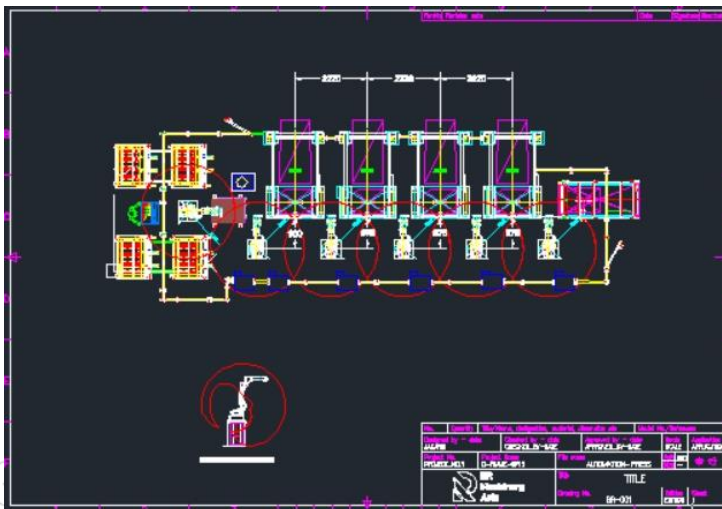
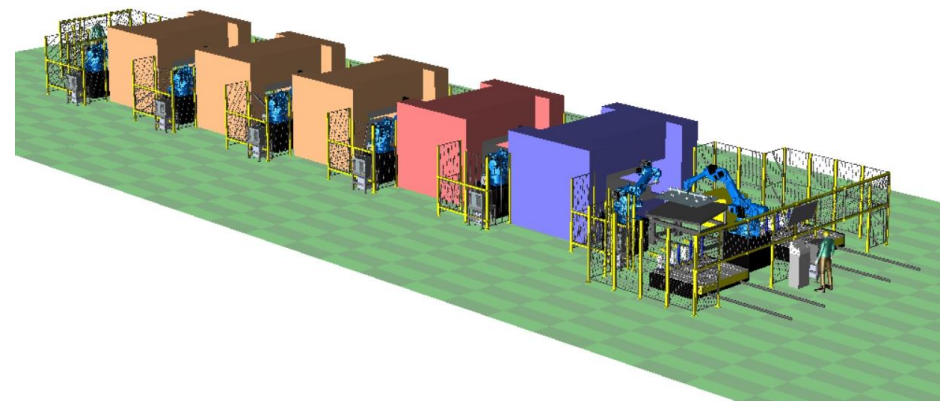
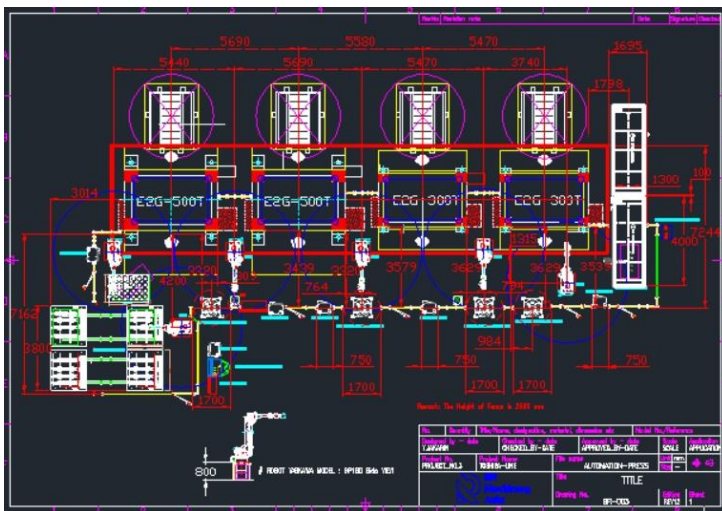


## Big Line specification

- Line speed : 11-12 spm.
- Machine : 600-600-500-500 TON 4 m/c
- Handling Robot : Yaskawa PH130F  
(Payload 130 Reach 2600 mm) 6 M/c
- Controller : Mitsubishi Q Series
- Function : Fixed Auto Changer
- Blank sheet : 900x1700 mm.

## Small Line specification

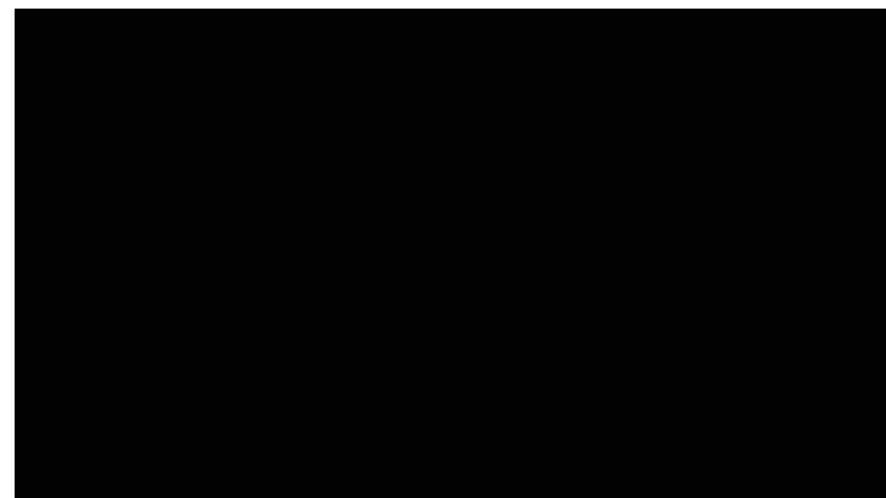
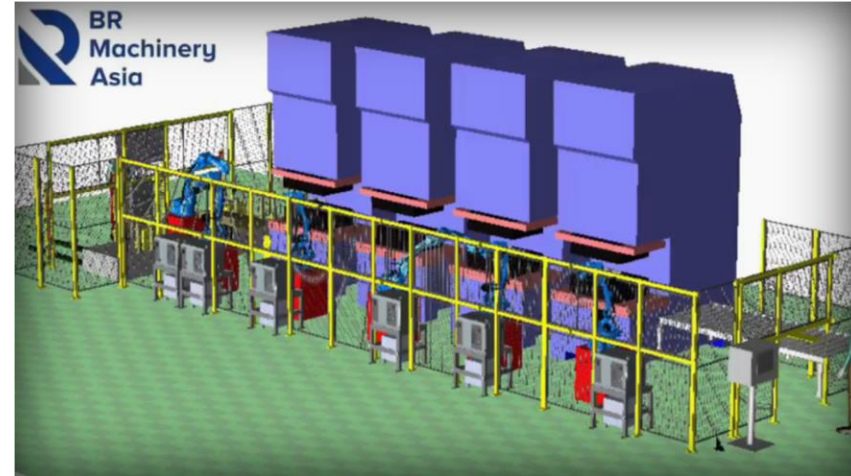
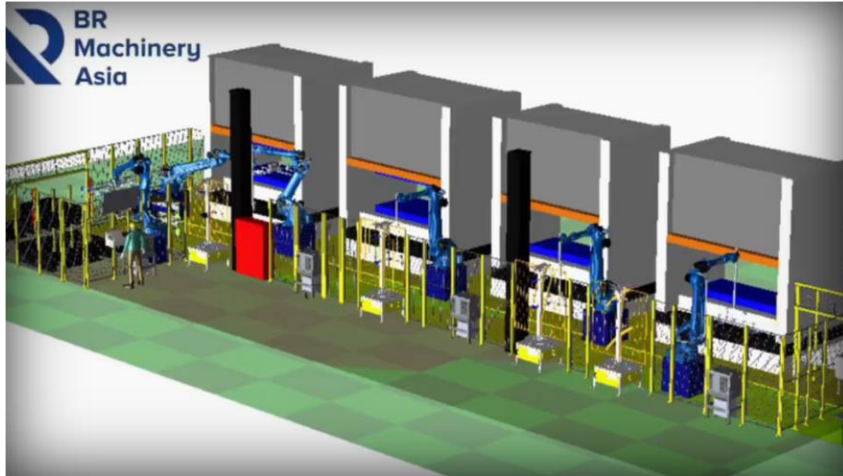
- Line speed : 11-13 spm.
- Machine : 150-150-200-200 TON 4 m/c
- Handling Robot : Yaskawa GP50  
(Payload 50 Reach 2061 mm) 6 M/c
- Controller : Mitsubishi Q Series
- Function : Fixed Auto Changer
- Blank sheet : 400x400 mm.



# Robot For Press Machine



Ref. Video:





# Robot For Press Machine



## Automation Washing Washing Raw Sheet

This is a full Robot Automation for wash oil of raw material sheet before used to next process





# Laser Cutting Cell



## LASER CUTTING

Robot CO2 Laser Cutting Standard System. It comes with a complex design which requests a small space. Integrates all completed component Robotics, CO2 Laser Power Source, Turn Table, smoke collector and control system. The main application is to cut plastic and carpet material such as plastic car bumper // instrument panel // car headliner etc..

Ref. Video:



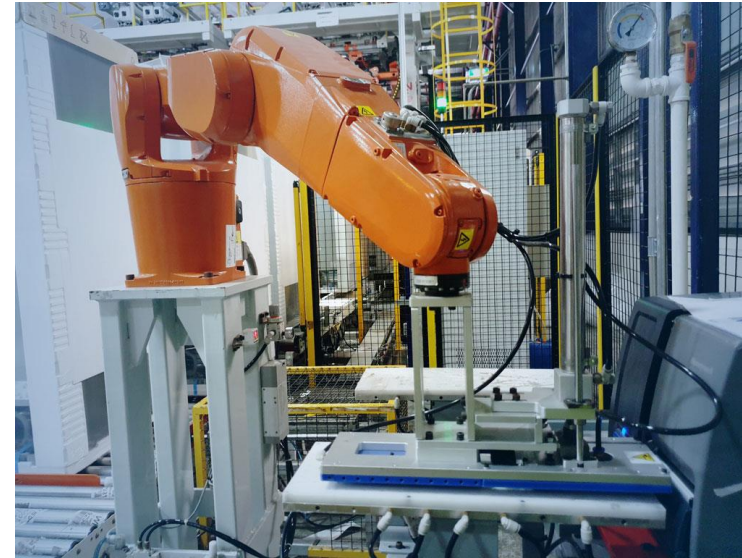


# General Robots Automation Systems



## Auto Labelling

This is a refrigerator production line; the goods will be tracked by barcode label. Robot will take a barcode label and stick on the goods which is mixed a model. Robot is informed the coming up model from the sensor then robot will automatically select program to stick the barcode label on the correct position at the goods.





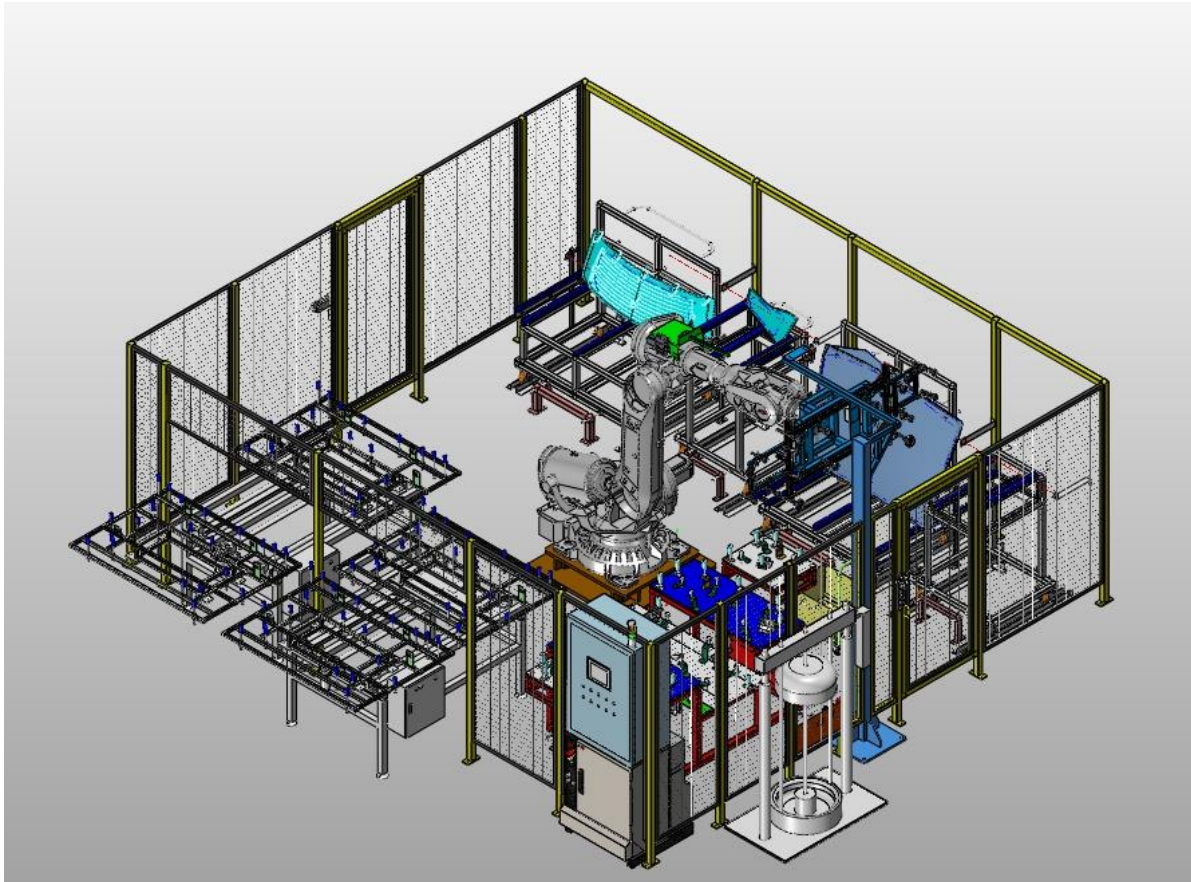
## Injection Molding Application

Robotic technology plays a significant role for plastic injection moulding post processing. A robotic **trimming** cell provides superior repeatability when compared with a human performing the same task, and it increases flexibility by performing multiple operations. A robot will consistently dispense the same amount of sealant or adhesives following a highly repeatable pattern, offering greater shot accuracy, improving cycle times and reducing waste. With or without vision, robots can **pick and place** plastic moulded parts for further operations such as inspection, testing and hot stamping.

In the **assembly** of injection moulded parts, robots can perform complex welding operations using laser, ultrasonic and infrared, increasing precision and driving down cycle times.



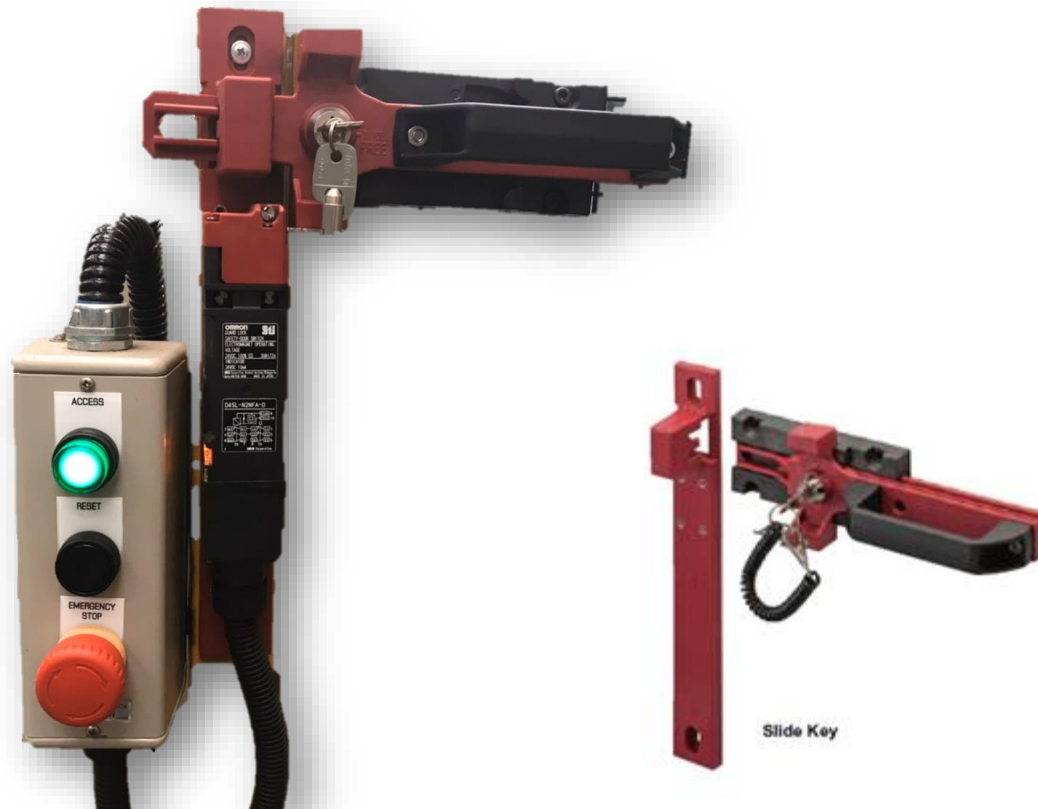




## Glass Windshield Robot Handling

Glass Windshield bonding for automotive OEMs and tier one automotive and sunroof applications is a multi-step process that requires consistency and reliability in each segment. Primers or activators may be applied to the glass prior to encapsulation or prior to the application of urethane, if being bonded to a substrate. Primers may also be applied to the substrate prior to bonding to the glass. It is critical that all materials are applied accurately to ensure product quality

## Guard Lock Safety-door Switch at Service Box



### Specifications

Weight: Approx. 0.6 kg  
Mechanical durability:  
20,000 operations min.

### Contents

Slide Key: 1 (not yet mounted)  
Inner Lever: None  
D4SL-N mounting plate: 1  
Door Switch special mounting screws: 3  
D4SL-NK1 (operation key): 1  
D4SL-NK1 special mounting screws: 2  
Lockout keys: 2  
Lockout key strap: 1  
Caution labels (stickers): 2 sheets  
(English and Japanese)



# Safety Systems



## Safety Guard: Light Curtain Keyence



Units: mm

Model	Beam axes	A: Length	B: Detection height	C: Protection height	D: Beam axis pitch	E	F	G
GL-R14L	14	560	520	605	40	30	42.5	280
GL-R16L	16	640	600	685				320
GL-R18L	18	720	680	765				360
GL-R20L	20	800	760	845				400
GL-R22L	22	880	840	925				440
GL-R24L	24	960	920	1005				480
GL-R26L	26	1040	1000	1085				520
GL-R28L	28	1120	1080	1165				560
GL-R30L	30	1200	1160	1245				600
GL-R32L	32	1280	1240	1325				640

# Safety Systems



- Safety Plug
- Safety Relay
- Safety Door Handle
- Area Sensor

## Magnetic Switch



## Area Sensor



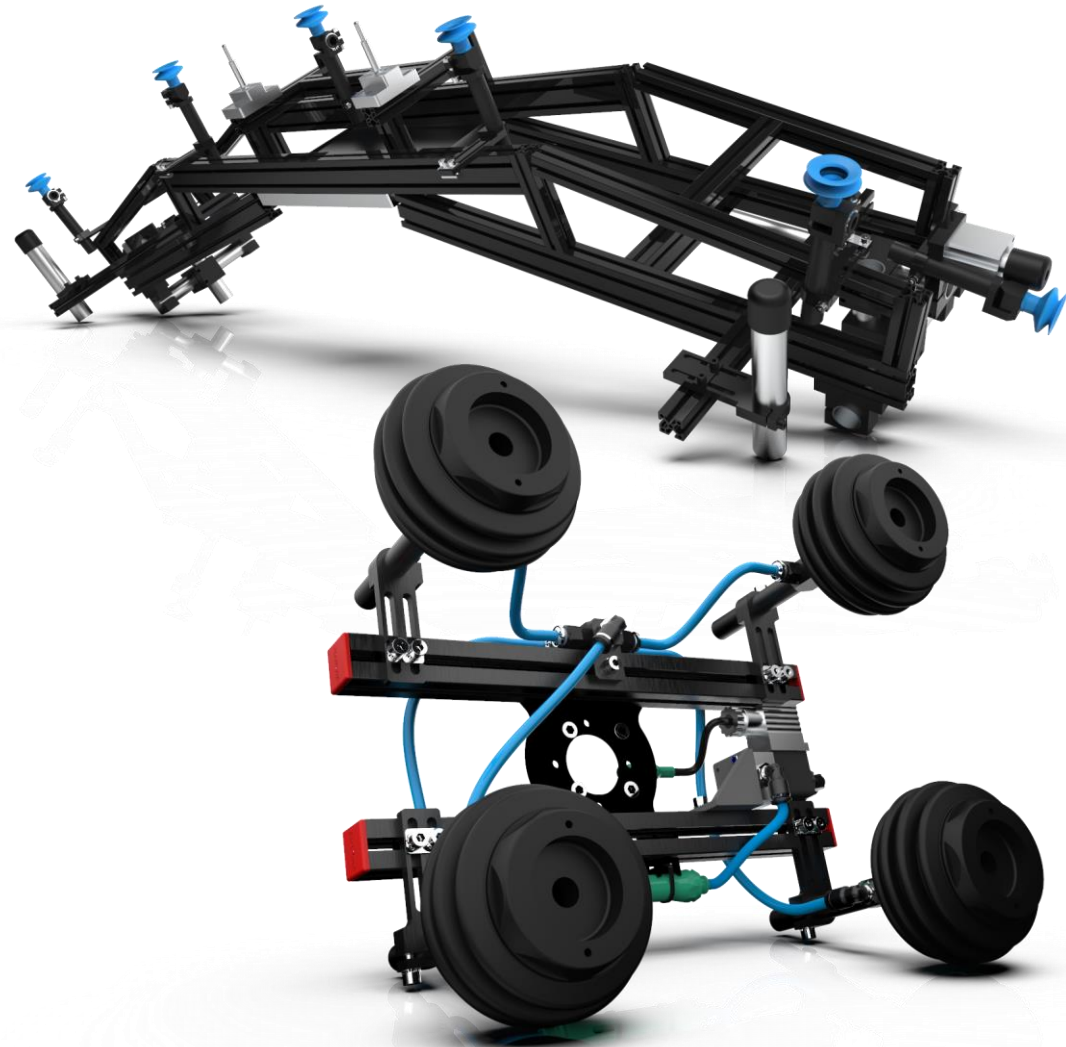
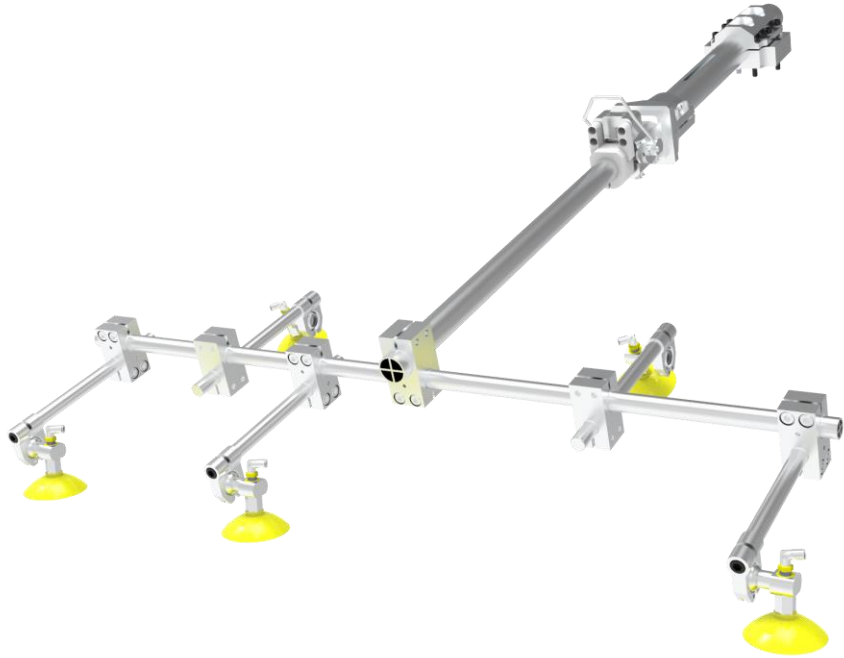
## Safety Door Handle



# Componence.



- BR supplier componence for Robot Gripper such as :  
Press, Injection, etc..



# Our Customers.





